

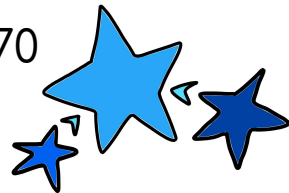
BEGINNERS' DAY

2024

McKee Road Elementary AllStars
Incoming Kindergarteners for the 2024-2025 School Year

WHAT YOU NEED TO KNOW.....

- We are excited to welcome your child to McKee Road beginning August 2024!
- CMS Online Enrollment is currently open. If you have not already done so, please submit an application at <https://www.cmsk12.org/enroll>.
- Each child entering kindergarten must have a current health assessment and up-to-date immunizations.
- Please call the school office if you have questions 980-343-3970



STAGGERED ENTRY IN AUGUST

Kindergarten Students will follow a staggered entry schedule beginning with the first day of school on Monday, August 26th. Kindergarten students will report to school only one day during the first week of school.

Kindergarten students will report to school using the following schedule:

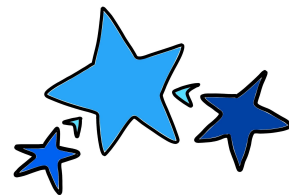
- Monday, August 26: Students whose last name begins with the letters A-I.
- Tuesday, August 27: Students whose last name begins with the letters J-M.
- Wednesday, August 28: Students whose last name begins with the letters N-R.
- Thursday, August 29: Students whose last name begins with the letters S-Z.
- Friday, August 30: No Kindergarteners attend school



PLEASE MARK YOUR CALENDARS!

Friday, August 30th: Kindergarten teachers meet with administrators and create final rosters. If your child's teacher changes, you will receive a call from a teacher or administrator.

Tuesday, September 3rd: All kindergarten students return to school & report to their new classroom



RISING KINDERGARTEN PLACEMENT INFORMATION

To “Get to Know” your student, parents have the option to complete the Rising Kindergarten Placement Information form.

This form allows our administrators to learn a little more about your child. Please complete and submit by June 1st – a link will be posted on the McKee website:

<https://forms.gle/TyT1ViCoqMZeeLVx8>



PARENT TEACHER ASSOCIATION (PTA)

What is a PTA:

A group of Staff and Parent Volunteers that represent and support our school in various ways.

This includes, but is not limited to: creating and executing events for our families throughout the year, supporting and celebrating our staff, coordinating fundraisers, maintaining regular communication with families, representing and advocating for our school and our students/staff/families, and so much more!

Who is the PTA:

The PTA consists of Board of Directors:

- Principal, Vice Principal, the elected PTA Officers (President, Vice President(s), Secretary, and Treasurer), as well as Teacher Representative(s), and Chairpersons of any Standing Committees

Other PTA Members include:

- Various Special Area Committees and Parents*

**PTA dues must be paid each year to be considered a voting member*

How to Join:

PTA Officers are elected by majority vote of current/valid PTA Members and must also be current/valid PTA Members. They are also required to be registered CMS Volunteers. Committee Chairs, Committee Members, and other General Volunteers are able to volunteer by contacting the Board directly via email at mckeeroadpta@gmail.com (attn: PTA 2024-25).

- For detailed descriptions of Officer and Committee Positions [click here](#).

Why Join?:

The more members we have, the more support the children in our school and community will receive.

What are the benefits of joining?

- The PTA benefits parents as well as our students, staff, and school. PTA functions are opportunities to meet other parents and teachers, building rapport and discussing issues that are on your mind. Joining the PTA also means you get a "VOICE and a VOTE" in helping shape the education of your child at McKee Road Elementary. Every dollar we spend is debated and voted on by the members at our meetings.

Who can join?

- The MRES PTA is an inclusive organization that is open to all adults who care about children and schools. It is made up of parents, guardians, family, friends, teachers, and even members of the community.

How do I join?

- Joining is simple! Just complete the membership form and pay your membership fee on <https://mckeerood.memberhub.com/>

What do my dues pay for?

- Membership dues are split between the state and national PTA offices. In return, local PTAs and members receive access to valuable resources, information, grants, support, and training programs. Find more information at www.NCPTA.org and <http://meckpta.weebly.com/>

RISING KINDERGARTEN PLACEMENT INFORMATION

Some Events and Activities Hosted or Supported by the MRES PTA Team:

Monthly Spirit Nights and Meet-Ups
Monthly Coffee Chats with the Principal
Monthly Staff Treats
Monthly Spirit Wear Days
Book Fair (Fall and Spring)
Fundraisers (i.e.: Boosterthon Fun Run)
International and Cultural Heritage Night/Week
Autism Awareness Week
Staff Appreciation Week
Spirit Week
Fall Jamboree
School Dance
Family Nights
Service Projects
...and much more!

Some Helpful Info for New Parents:

Pay Student Fees, order Spirit Wear and More!
<https://mckeeroad.memberhub.com/>
(School/PTA payments are made here)
Be sure to sign up for the Mini News ([here](#))

The PTA uses Facebook for updates and communication

(<https://www.facebook.com/groups/MRESPTA>)

Link your Harris Teeter VIC Card

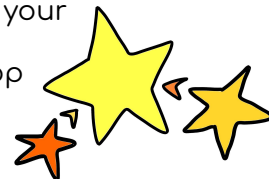
(<https://www.harristeeter.com/together-in-education> -- school code 1419)

Connect Your Amazon Account to McKee PTA's Amazon Smile:

(Visit <https://smile.amazon.com/ch/56-1665313> -- Sign in with your Amazon.com credentials -- Choose PTA North Carolina McKee Road Elementary as your charitable organization)

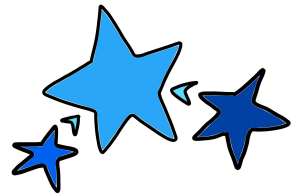
Download the BoxTops for Education App

Contact the MRES PTA Team any time at mckeeroadpta@gmail.com



ROLE OF THE SCHOOL NURSE

- Screens for health problems that may interfere with learning.
- Consults with school regarding health and safety issues.
- Helps manage children with chronic medical conditions.
- Provides referrals to community resources.



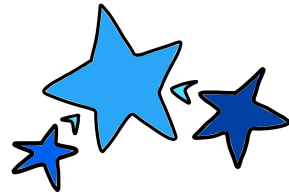
IMMUNIZATIONS

- All children attending school in North Carolina must complete a series of immunizations.
- North Carolina law **requires** all principals to exclude children from school who have not completed this series within 30 days of enrollment.
- The immunization record must be brought to school when the child is enrolled.



NEED IMMUNIZATIONS/SHOTS?

- Available at your doctor's office or clinic and at both Health Department locations.
- Call **704-336-6500** for a Health Department appointment.
- Bring immunization record to appointment.



KINDERGARTEN HEALTH ASSESSMENT

- NC law requires all first-time Kindergarten and Pre-K students to have a physical exam.
- The exam must be done no more than 12 months prior to the date of school entry.
- Schedule **NOW** if not already completed.
- No Doctor? Ask your School Nurse.

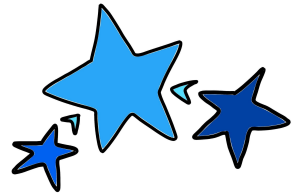


MEDICATIONS

The school does NOT provide medications for students. It is best for the student to take medications at home. This eliminates class disruption and loss of learning time.

If medications are needed at school...

- A medication authorization form must be filled out by the doctor and parent. This is required for all medications, including over-the-counter medications such as Tylenol, cough syrups, and ointments.
- The parent is to provide medications and refills. All medications must be in their original containers.



ILLNESS AT SCHOOL

Schools are limited in their ability to care for your sick child.

Your child will need to go home if sick at school (vomiting, fever, injuries and infections).

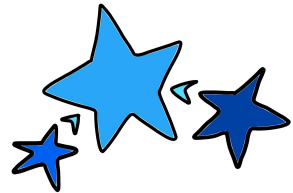
Please provide emergency phone numbers to school and update as numbers change



CHRONIC ILLNESSES

If your child requires medications or procedures at school, please notify the school nurse or staff now so planning can begin.

Examples: Diabetes, Asthma, Severe Allergies, Seizures, or Dietary restrictions.



HEALTHY KIDS LEARN BETTER

Begin every day with **BREAKFAST!!!!**

Promote good sleeping habits.

Provide an opportunity for play and exercise.



AFTER SCHOOL ENRICHMENT PROGRAM AT MCKEE ROAD (ASEP)

The After School Enrichment Program provides a warm, caring environment beyond school hours where students have the opportunity to play with school friends and get their homework out of the way before the family sits down to dinner. ASEP offers exciting activities, including sports, art activities and computer exploration, which stimulate children to be healthier and happier.

Besides academic support, the ASEP program focuses on social skills development. Program leaders are respectful and positive toward children, mindful of the importance of appropriate role models. Students are encouraged to develop friendships with schoolmates that for some will last many years.

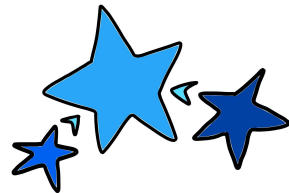


ASEP (CONT'D)

ASEP Coordinator for McKee - Lauren Sifford.
980-343-3970/laurenf.sifford@cms.k12.nc.us

For 2024-2025 fees and more information about the After School Enrichment Program visit the CMS website, click on Departments, and then ASEP. Or call the ASEP office at 980-343-5567 or email at asep@cms.k12.nc.us

*****ASEP operates from school dismissal until 6:00PM.*****

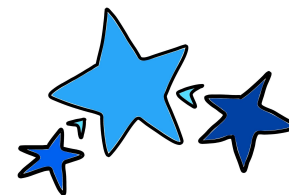
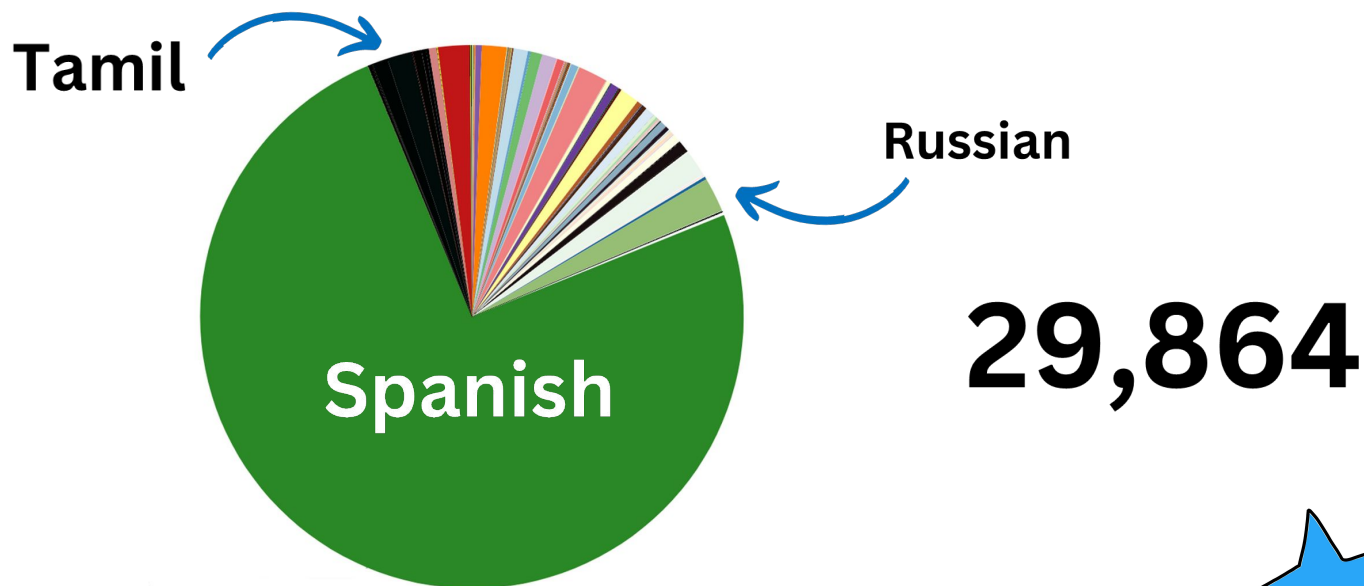


MULTILINGUAL LEARNERS AT MCKEE

Multilingual Learner Teacher: Luchia Luchian



CMS MULTILINGUAL LEARNERS

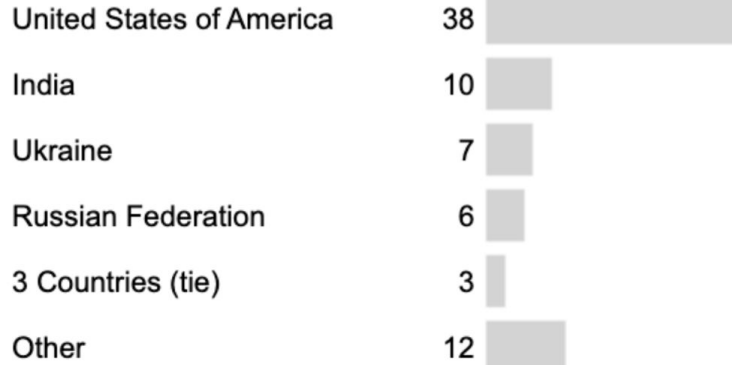


MULTILINGUAL LEARNERS AT MCKEE

English Learner Birth Countries and Native Languages Spoken

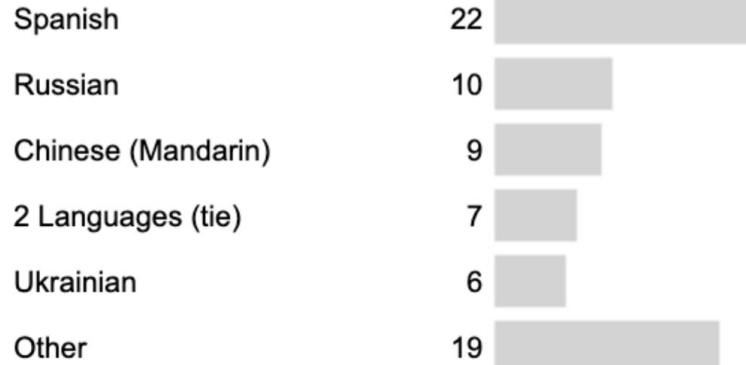
Birth Countries

17



Languages

15



MULTILINGUAL LEARNERS AT MCKEE

Total Enrollment		
532		
Language Minority	178	33.5%
EL/LEP Direct	82	15.4%
Female	35	42.7%
Male	47	57.3%
Kindergarten	12	14.6%
Grade 01	17	20.7%
Grade 02	10	12.2%
Grade 03	15	18.3%
Grade 04	17	20.7%
Grade 05	11	13.4%
EL and SWD/EC	18	22.0%
EL and AIG	2	2.4%
McKinney-Vento	1	1.2%
SIFE Students	0	0.0%

English Learner Attendance and Absenteeism				
Attendance Rate	Dropouts	10 Day Violators	Retained	Mobility Rate
95.2%	0	0	3.4%	25.0%

English Learner Chronic Absenteeism				
% Chronic Absent	1 Absence Away	2 Absences Away	3 Absences Away	4 Absences Away
12.6%	2	2	2	5

English Learner Discipline/Suspensions					
All Suspensions		In-School Suspensions		Out of School Suspensions	
# w/Suspension	# Suspensions	# w/ISS	# ISS	# w/OSS	#OSS
3	3	2	2	1	1

English Learner Years in US Schools						
Unknown	0-1 Year	2 Years	3 Years	4 Years	5 Years	Long Term
2	40	15	9	10	5	1



CMS ENROLLMENT LANGUAGE SURVEY

CMS Enrollment Language Survey

CHARLOTTE-MECKLENBURG SCHOOLS

Form 7251001

STUDENT ENROLLMENT FORM

7/2014

Special Services

Does your child have an Individualized Education Program (IEP)? Yes No

Does your child have a 504 Educational Plan? Yes No

Home Language Survey

Federal and state policies require schools to determine the language(s) spoken at home by each student. If the answer to any of the questions below is a language other than English, your child may be assessed on the WIDA ACCESS Placement Test (W-APT) to determine English language proficiency. Based on the results, your child may be identified as Limited English Proficient (LEP) and qualify for English Language Learner (ELL) services.

Date your child first attended K-12 school in the U.S. (do not include Pre-K)

What language does your son/daughter most frequently use to communicate?

English

What language did your son/daughter learn when he/she first began to talk?

German

What language do you most frequently speak to your son/daughter?

German

Do you need an interpreter for school meetings involving your child's education?

Yes No If yes, in which language?

ns
lenburg Schools

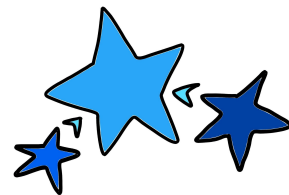


WIDA SCREENER

WIDA is an English language proficiency assessment given to new students in grades K-12 to help educators identify and better support the needs of Multilingual learners.

Key Features:

- Assesses each of the four language domains: Listening, Speaking, Reading, Writing.
- Screener for Kindergarten is scored locally by the test administrator.
- If a student is identified as an EL, proficiency level scores from WIDA Screener can be used by educators to compare across ELs and to plan differentiated levels of support for each child



ACCESS SCORE REPORT & ESSA EL PROGRESS





ACCESS Score Report & ESSA EL Progress

Kindergarten

2023 ACCESS Goal: 2.5
Expected to Exit: 2027 (Gr 5)

Individual Student Report 2022

This report provides information about the student's scores on the ACCESS for ELLs English language proficiency test. This test is based on the WIDA English Language Development Standards and is used to measure students' progress in learning English. Scores are reported as Language Proficiency Levels and as Scale Scores.

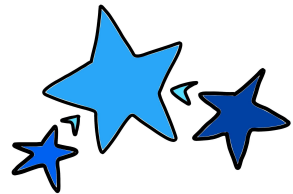
Language Domain	Proficiency Level (Possible: 0-6)						Scale Score (Possible: 100-600) and Confidence Band See Interpretive Guide for Score Reports for definitions					
	1	2	3	4	5	6	100	200	300	400	500	600
Listening 	2.9						250					
Speaking 	5.0						349					
Reading 	1.5						121					
Writing 	1.9						223					
Oral Language 50% Listening + 50% Speaking	4.3						300					
Literacy 50% Reading + 50% Writing	1.7						187					
Comprehension 70% Reading + 30% Listening	1.6						195					
Overall* 35% Reading + 35% Writing + 15% Listening + 15% Speaking	1.9						228					

Anonymized 2022 ACCESS Report



ATTENDANCE – EXCUSED ABSENCES

- Per the CMS Student handbook, absences are only considered excused due to illness, medical appointments, death in the family, quarantine, court proceedings, approved educational opportunity (form 5123.21 must be completed **PRIOR** to absence) or religious observance.
- McKee **MUST** receive a note for **every day** the child is absent to excuse the absence. **ALL** absences are **UNEXCUSED** until written documentation is received by the attendance secretary.
- Documentation can be an reporting an absence through the McKee Road website – www.cmsk12.org/mckeeroades **OR** an email to the attendance secretary at laurene.simmons@cms.k12.nc.us
- **ONLY 10 PARENT NOTES FOR ILLNESS WILL BE ACCEPTED PER YEAR.** After 10 Parent Notes, only a doctor's/dentist's note can excuse an absence/tardy.



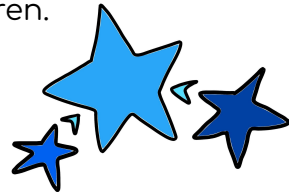
ATTENDANCE – UNEXCUSED ABSENCES

- Per the CMS Student Parent Handbook, traffic, oversleeping, leisure travel/family vacations, family emergencies, car trouble, bad weather, etc. are unexcused absences.
- Only the principal/attendance secretary can approve absences.
- Letters will be sent to parents at the 3, 6, and 10 day marks of unexcused absences.
- Under NC truancy laws, the parent of any child with more than 10 unexcused absences may be prosecuted.
- Please see the Student Parent Handbook at <https://www.cmsk12.org> for full clarification



TARDY/EARLY DISMISSAL

- Drop off begins at 7:15, and the start bell (aka tardy bell) rings at 7:45. Students that are not in their seat, ready to learn when the bell rings are tardy.
- If you use the car line in the morning and arrive at or after 7:45, you must park, walk your child in, and sign them in to school in the front office. We recommend using the bus.
- Students must be in class a MINIMUM of 210 minutes to count as present for the day.
- Need to leave early for an appointment? **EARLY DISMISSAL ENDS AT 2:00 SHARP. AFTERWARDS FAMILIES WILL BE DIRECTED TO THE CAR LINE.** School ends officially at 2:45.
- ALL tardy check ins/outs that note “appointment” for the reason **MUST** submit a doctor/dentist note to be excused.
- Afternoon car line moves very quickly, ending between 2:50 and 3:00. All parents should be in line by 2:45. Staff members have post instructional hours duties, and do not have capacity to watch children.



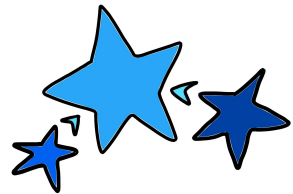
TRANSPORTATION - BUS

- CMS Transportation assigns buses and develops routes on an annual basis. Transportation communicates bus assignments to McKee at the start of the year.
- A bus stop can be requested at any time of year, but to guarantee your child has a bus on the first day of school, you must complete the intent to ride survey. This will be available in May on the Transportation website: www.cmsk12.org/buses
- Bus Drivers have rosters for each stop and will only allow assigned children onto the bus.
- The district does use the “Here Comes the Bus” app to update parents about the location of the bus along the route.



TRANSPORTATION - CAR LINE

- McKee does have a carpool line for morning drop off and afternoon pick up.
- All families are assigned a car tag with a number, which will be needed for afternoon pick up only. You must have the tag to use the car line.
- Our school uses software to enter the numbers, which then alerts the staff as to which students to dismiss. Car riders wait together in the gym and are monitored by staff.
- If you need to make any changes to your normal transportation, please make sure to contact that school and front office at laurene.simmons@cms.k12.nc.us before 1 o'clock.






Mrs. Braswell
Mrs. Rosthel
Ms. Welsh
Mrs. Raker



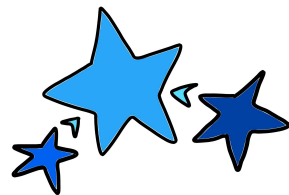
TYPICAL KINDERGARTEN DAY

7:15-8:00	Morning Work, Arrival, WMKE, Calendar	
8:00-8:30	SEL	
8:30-10:10	Literacy Block	
10:10-11:00	Lunch	
11:00-11:30	Flex Time	
11:30-12:30	Math	
12:30-1:00	Physical Activity	
1:00-1:55	Snack/Science and Social Studies	
1:55-2:40	Special Area Classes (PE, Art, Music and Media)	
2:45	Dismissal	



KINDERGARTEN READINESS CHECKLIST - ACADEMIC SKILLS

- Can count to 20.
- Can identify some letters of the alphabet.
- Identifies shapes and colors.
- Understands comparisons: small/medium/large, shorter, longer, etc.
- Can tell a story and recognizes characters in familiar stories.
- Recites and/or sings familiar songs, sayings, and stories.



KINDERGARTEN READINESS CHECKLIST - COGNITIVE SKILLS

- Communicates emotions and needs in sentences that are able to be understood by an adult.
- Relates a sequential story.
- Able to distinguish between story and fact.
- Can follow multi-step directions and obey.
- Able to complete a short activity from beginning to end.
- Demonstrates the ability to make plans for play, building, drawing, etc.




KINDERGARTEN READINESS CHECKLIST - MOTOR SKILLS

- Can catch and throw a ball.
- Able to use scissors properly.
- Climbs stairs by alternating feet and holds on to the handrail.
- Demonstrates improvement in balance.
- Should try new, challenging things, while exercising caution.
- Can build a small puzzle with 10-20 pieces.
- Can construct a tower with blocks.



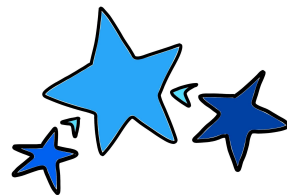
KINDERGARTEN READINESS CHECKLIST - LIFE SKILLS

- Can write his/her first and last name.
- Can recite his/her home address and phone number.
- Knows how to call an emergency number for help.
- Able to brush teeth and hair independently.
- Can use eating utensils properly. 
- Able to sit quietly for a short time.
- Picks up toys and participates in family chores with or without assistance.



KINDERGARTEN READINESS CHECKLIST - SOCIAL SKILLS

- Can explain basic types of emotions and demonstrate understanding of them: happy, sad, angry, bored.
- Able to manage emotions when frustrated and calmly ask for help.
- Can participate in games with others.
- Demonstrates a basic understanding of right and wrong and that there are consequences to actions.
- Shares with other children and uses respectful words.
- Able to play independently or with others without constant supervision.



KINDERGARTEN SIGHT WORDS

I	see	a	the	is	you	do	of
have	your	can	yes	had	to	we	go
on	at	he	get	into	has	new	she
it	her	and	in	that	was	for	as
his	be	come	by	this	off	not	are
because	look	came	here	no	me	like	my
so	said	am	how	put	up	need	soon
went	who	where	saw	good	they	some	under
got	if	would	away	been	him	did	boy
girl	but	one	pretty	or	all	always	word
with	our	what	from	which	then	first	down
there	out	were	when	little	an	its	their
each	them	once	other	many	these	use	should
why	about	three	ate	eat	black	brown	white
now	may	goes	must	well	will	friend	could
very	right	blue	does	yellow	green	two	five
after	any	around	try	only	today	again	ask

Here is a list of common sight words that your child will learn during kindergarten. This list is provided so parents can begin to work with their child over summer if they choose.

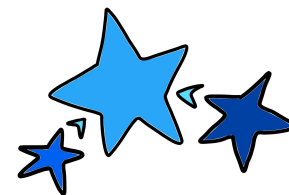
For a printable list, please visit:

bit.ly/MRESKinderSightWords



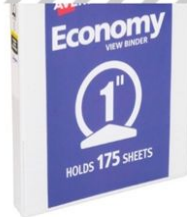
2024-2025 KINDERGARTEN SCHOOL SUPPLY LIST

- One 1-inch white binder with clear front cover sleeve (Avery- "O" ring)
- One box of Gallon size Ziploc bags (girls)
- One box of Quart size Ziploc bags (boys)
- One package of fat yellow pencils (Ticonderoga)
- Six Large PURPLE glue sticks (Elmer's)
- One Large book bag without wheels
- Two tubs of baby wipes
- Two large pink erasers
- One box of colored pencils 12 count (Crayola)
- Two Mead Primary Journals- Half top of page plain/Bottom liner (Office Depot)
- One box of Washable Thick Crayola Classic markers 8 count
- One box of Washable Thin Crayola Classic markers 8 count
- Two boxes of tissues
- Headphones (wired)
- One 16 pack of regular sized Crayola crayons

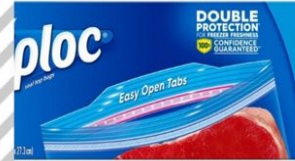




HOT BUY
Lead K-2 Classroom Primary Journal



Every 1" Round Rings 175 Sheet Capacity Economy View Binder - White



PIC-COLLAGE

VOLUNTEERING AT MCKEE

We love our volunteers – they make so many events possible! Without volunteers, we could not have field trips, fundraising events, book fairs, and so much more – **but you must be a registered CMS volunteer to participate.**

Do not wait until a field trip is announced to register! At McKee Road, teachers **always** verify a parent chaperone's clearance prior to accepting fees and approving chaperone requests. In order to received chaperone level of clearance, you must provide a SSN when applying.

To Register as a CMS volunteer, go to www.cmsvolunteers.com. You will establish a personal username and password for your profile information. Your volunteer profile is available to the volunteer coordinator at the school(s) you select as your preferred school(s), CMS Law Enforcement, and the district's volunteer supervisor.

Keep in mind that **the CMS Volunteer system updates annually.** You must re-register each year and will receive a reminder email in July/August to log into your account and re-submit for next school year. **IT'S EASY AND ONLY TAKES A FEW CLICKS TO RESUBMIT.**

If you have questions please email Lauren Simmons, Volunteer Coordinator at laurene.simmons@cms.k12.nc.us

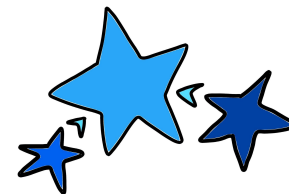


GETTING CONNECTED AT MCKEE

ParentSquare is our primary communication platform at McKee and CMS in general. At LEAST one parent from each household must be registered. ParentSquare sends “text” style alerts from teachers, administrators, and the PTA, as well as houses the school events calendar, parent sign up lists, helpful links and more. You will want to download the ParentSquare app for ease of use after you receive an invitation to join over the summer.

CMS website - There is so much information on the CMS website: school calendars, lunch menus, transportation forms, afterschool registration, and more.

McKee Road Website - Please visit the school website <https://www.cmsk12.org/McKeeRoadES> to view a calendar of events, to report an absence, to find the school supply lists, staff email lists, etc.



OFFICE STAFF AT MCKEE

Principal
Assistant Principal
Sr. Admin Secretary
Data Manager & Registrar
Academic Facilitator
Talent Development Teacher
School Counselor
School Nurse
After School Coordinator

Office Phone 980-343-3970
Office Fax 980-343-3976

Lane Price
Michelle Bitter
Crystal Rajkumar
Lauren Simmons
Sarah Westbrook
Devika Ragbeer
Ericka Ficker
Sarah Zmyslowska
Lauren Sifford

l.price@cms.k12.nc.us

m.bitter@cms.k12.nc.us

crystaln.rajkumar@cms.k12.nc.us

laurene.simmons@cms.k12.nc.us

sarahe.westbrook@cms.k12.nc.us

devikas.ragbeer@cms.k12.nc.us

ericka.ficker@cms.k12.nc.us

Sarah.Zmyslowska@mecklenburgcountync.gov

laurenf.sifford@cms.k12.nc.us



ADDITIONAL RESOURCES

- "Going to Kindergarten" Handout - Kindergarten tips (available in school office)
- NC Health Assessment Form (available on CMS website and school office)
- Kindergarten - A Handbook for Parents (available in school office)
- Visit the CMS website for additional forms: www.cmsk12.org
- Visit the North Carolina Department of Public Instruction website for Kindergarten Reading Support Strategies <https://bit.ly/3GW89Rf>
- Family's Guide to Supporting Kindergarten Readiness <https://bit.ly/3opm2B9>

